

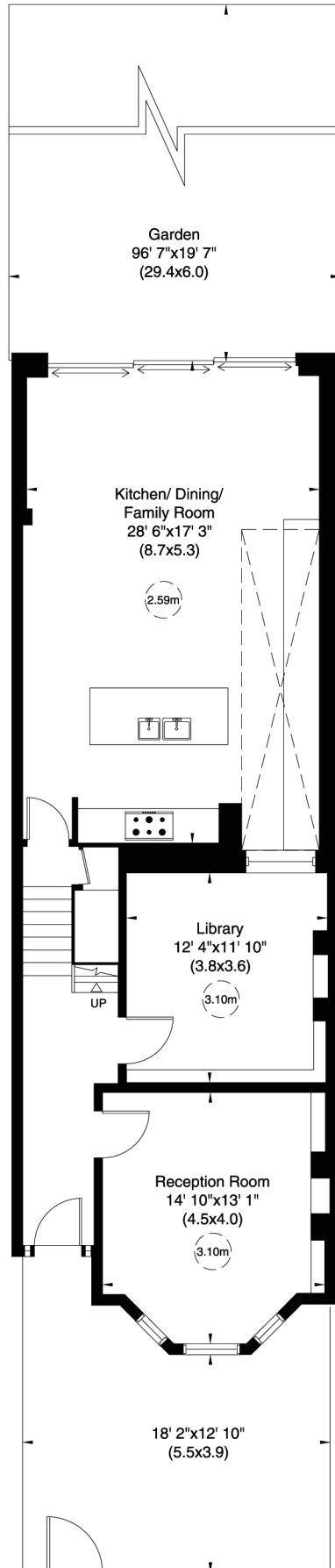
Crediton Road, NW10

Approximate Gross Internal Area

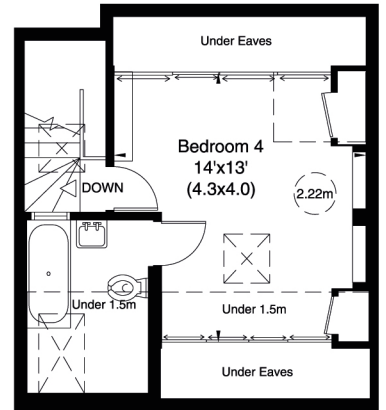
258 sq m/ 2780 sq ft Including Under 1.5m and Under Eaves

212 sq m/ 2279 sq ft Excluding Under 1.5m and Under Eaves

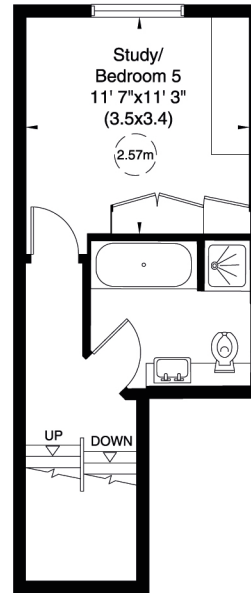
Not to Scale, for identification only



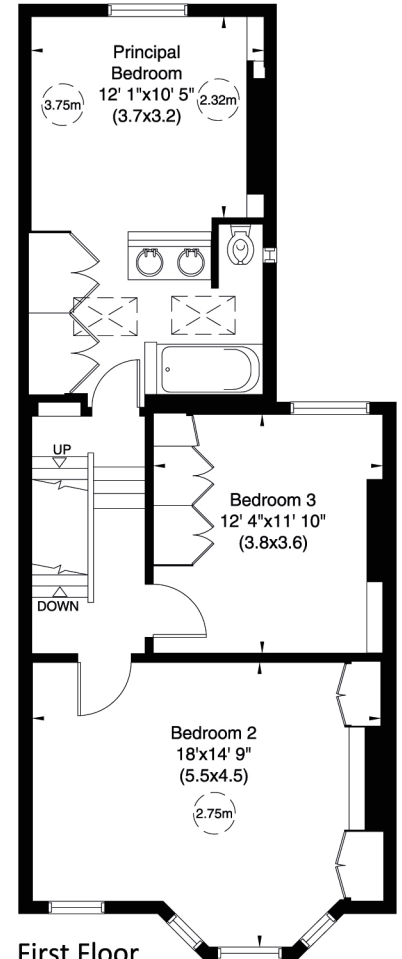
Ground Floor



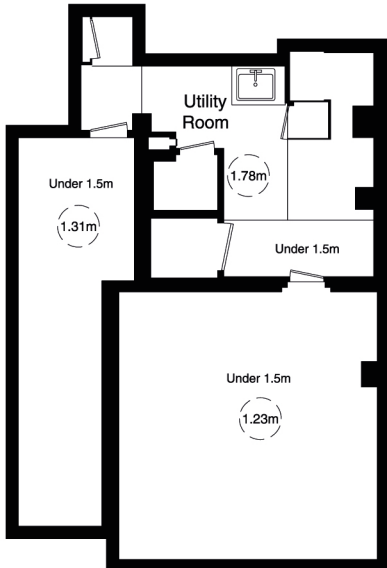
Second Floor



Half Landing



First Floor



Basement

For guidance only and must not be relied upon as a statement of fact.

All measurements and areas are approximate only (and have been prepared in accordance with the current edition of the RICS Code of Measuring Practice).

