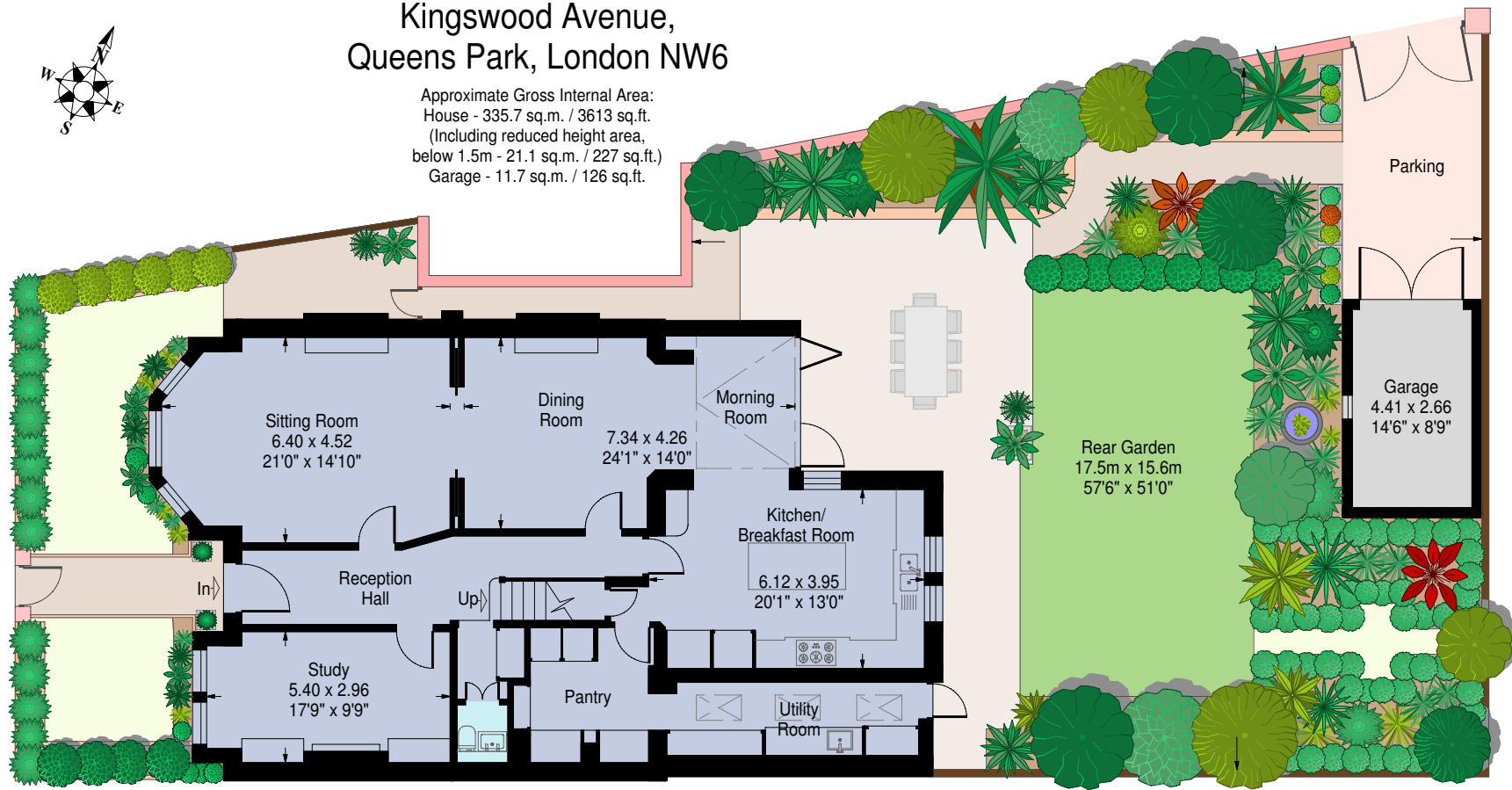


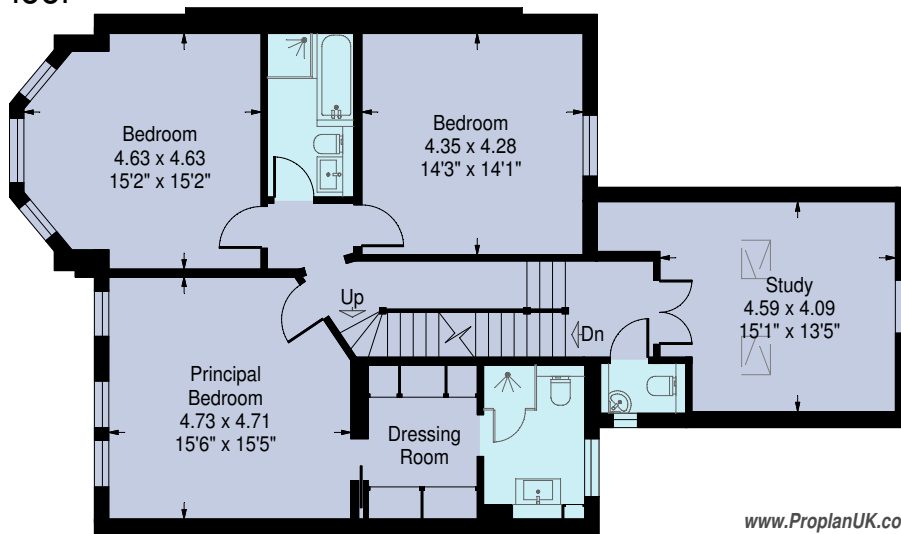
# Kingswood Avenue, Queens Park, London NW6



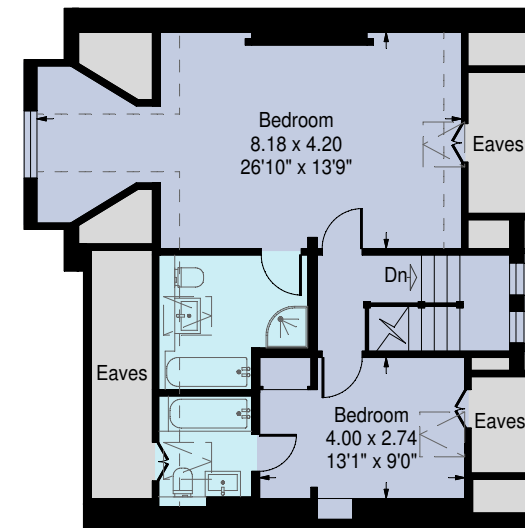
Approximate Gross Internal Area:  
 House - 335.7 sq.m. / 3613 sq.ft.  
 (Including reduced height area,  
 below 1.5m - 21.1 sq.m. / 227 sq.ft.)  
 Garage - 11.7 sq.m. / 126 sq.ft.



Ground Floor



First Floor



Second Floor

[www.ProplanUK.co.uk](http://www.ProplanUK.co.uk)

This plan is for guidance only and must not be relied upon as a statement of fact.