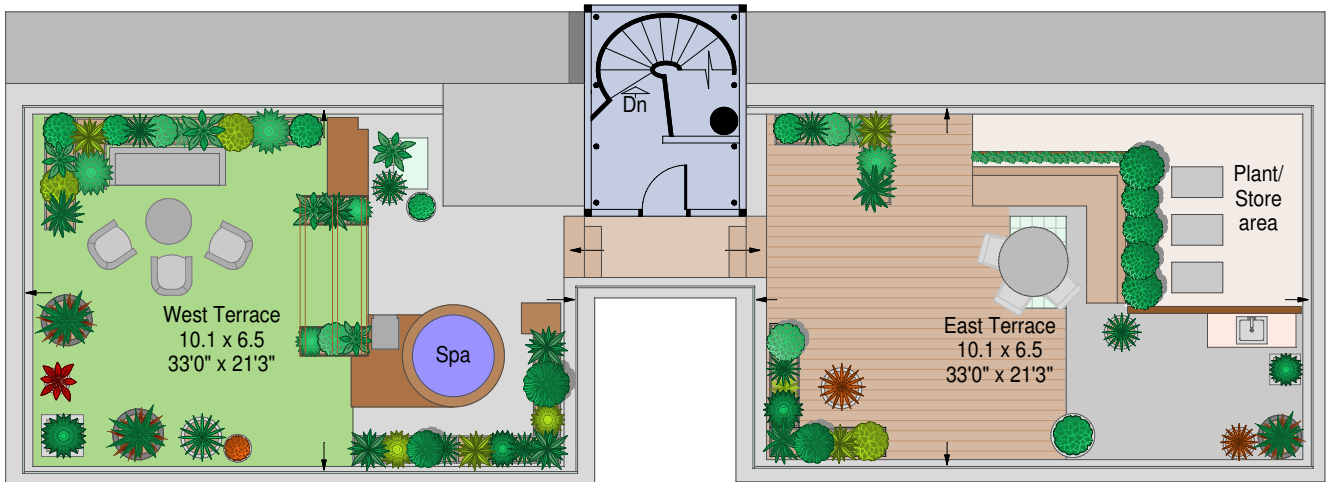


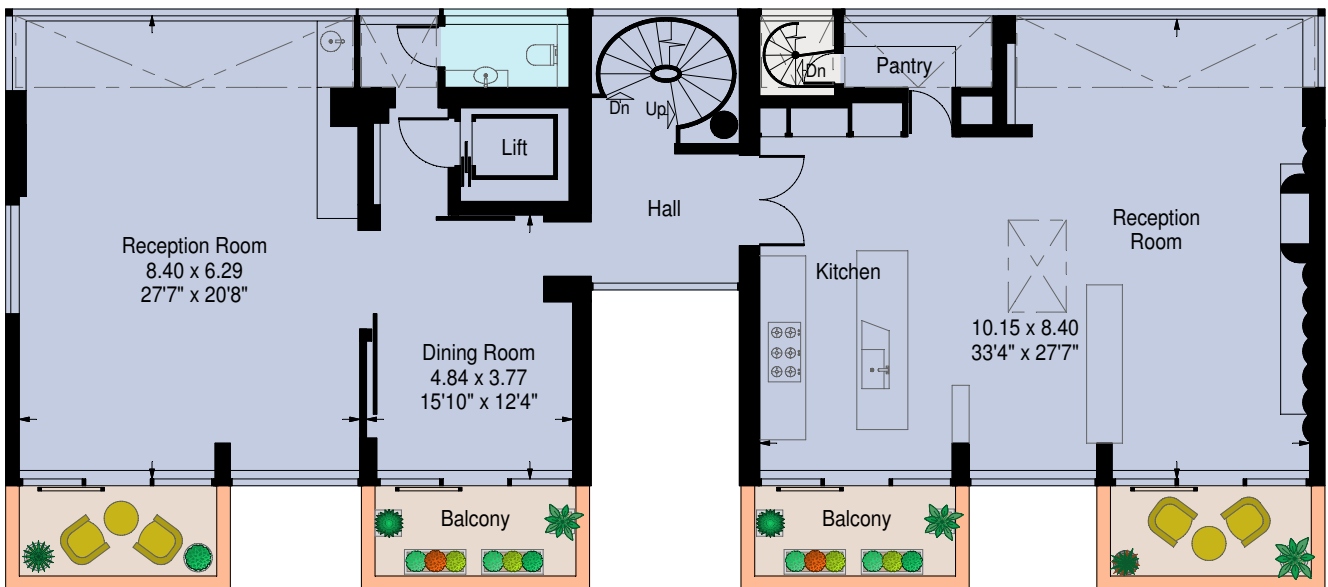
# Prince Albert Road, London NW1

Approximate Gross Internal Area:  
Apartment - 395.5 sq.m. / 4257 sq.ft.

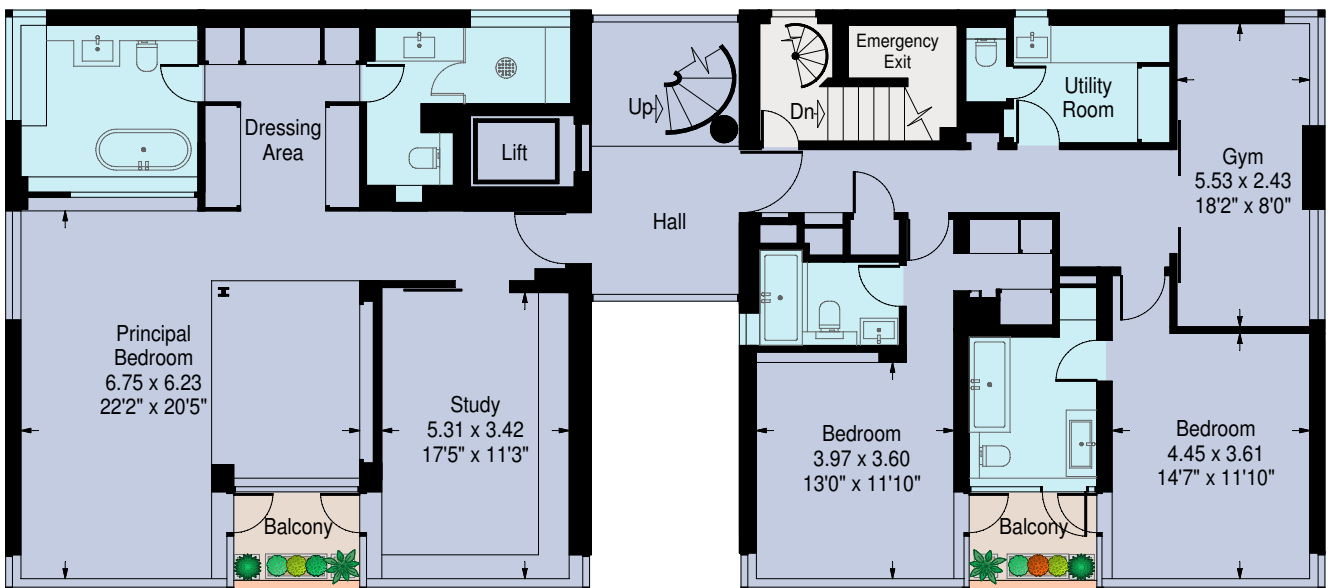
Terraces/Balconies - 168.4 sq.m. / 1813 sq.ft.



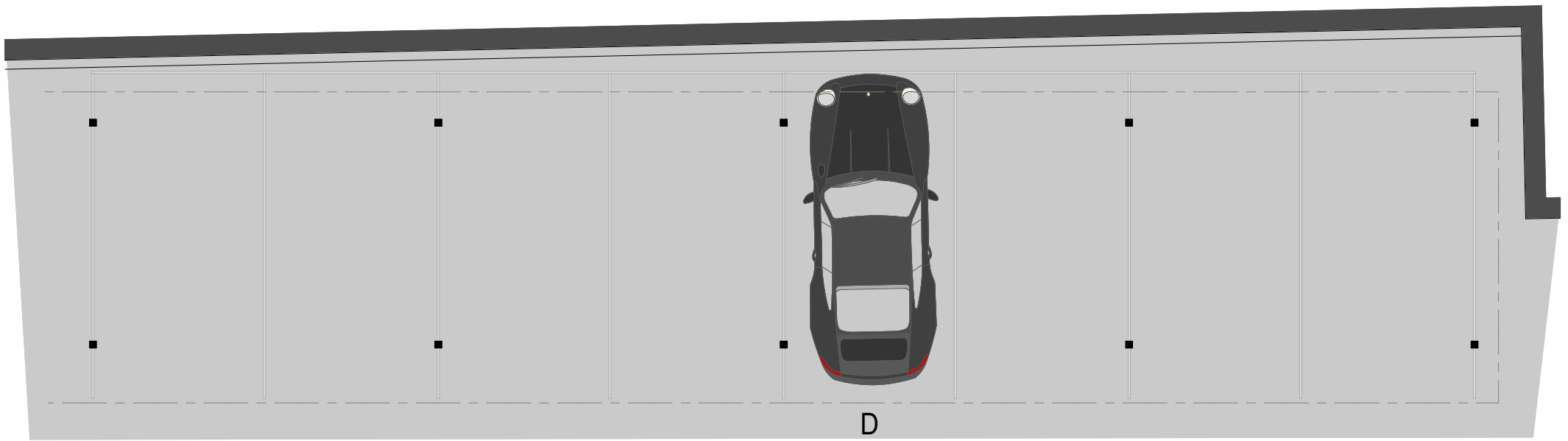
## Eighth Floor



## Seventh Floor

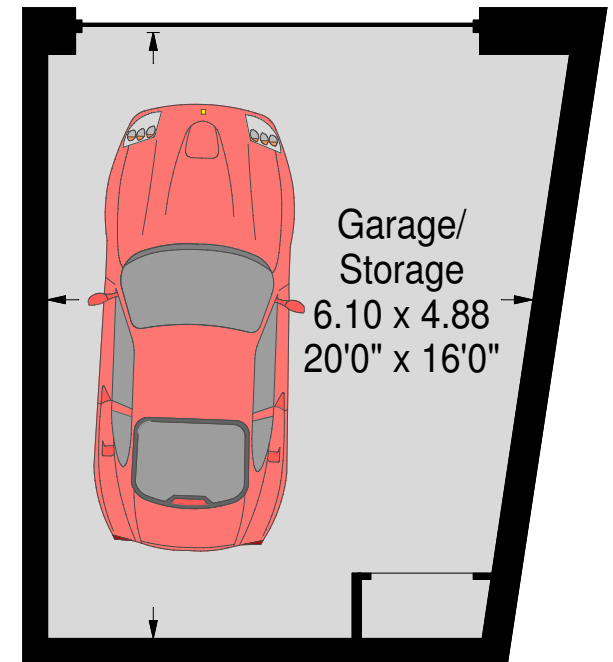
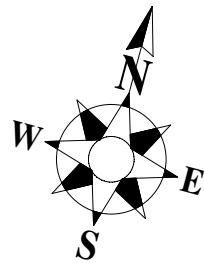


## Sixth Floor



# Prince Albert Road, London NW1

Approximate Gross Internal Area:  
Garage - 29.0 sq.m. / 312 sq.ft.



Ground Floor