

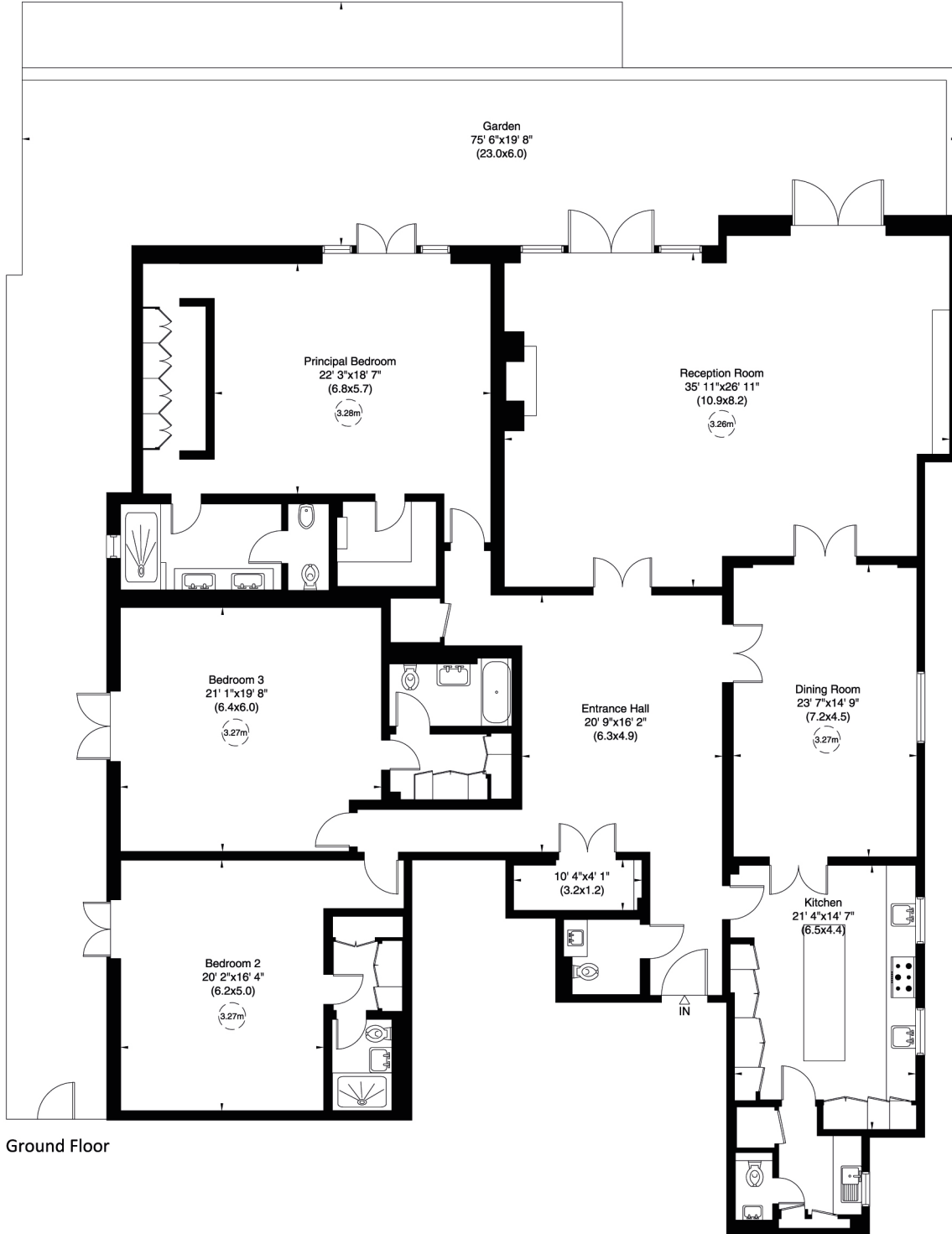
# Allingham Court, Bishop Avenue, N2

Approximate Gross Internal Area

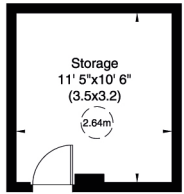
400 sq m/ 4311 sq ft Including Storage

389 sq m/ 4190 sq ft Excluding Storage

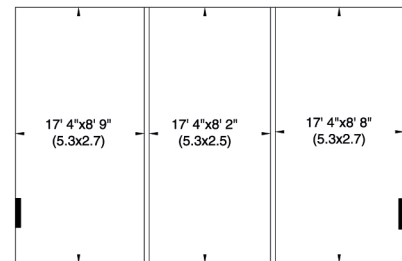
Not to Scale, for identification only



Ground Floor



Basement



Triple Parking Space

Basement

For guidance only and must not be relied upon as a statement of fact.  
All measurements and areas are approximate only (and have been prepared in accordance with the current edition of the RICS Code of Measuring Practice).

