

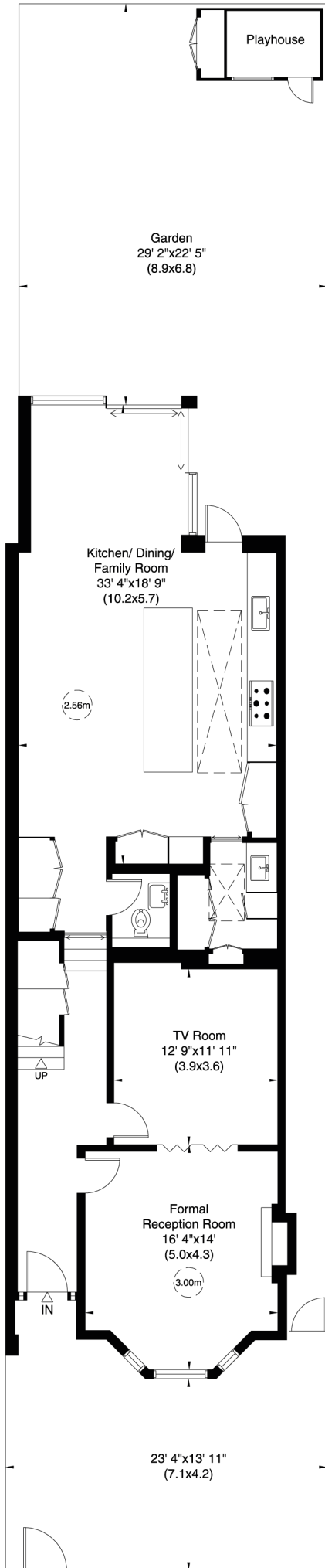
Milman Road, NW6

Approximate Gross Internal Area

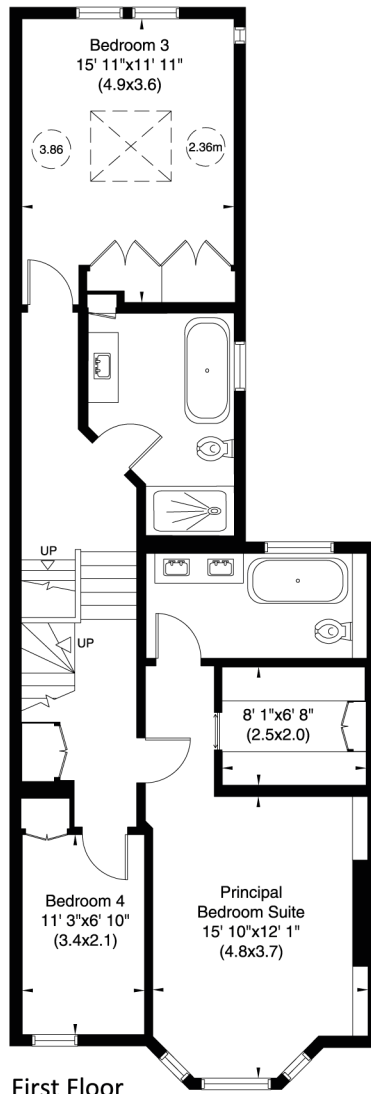
233 sq m/ 2512 sq ft Including Under 1.5m and Loft

214 sq m/ 2305 sq ft Excluding Under 1.5m and Loft

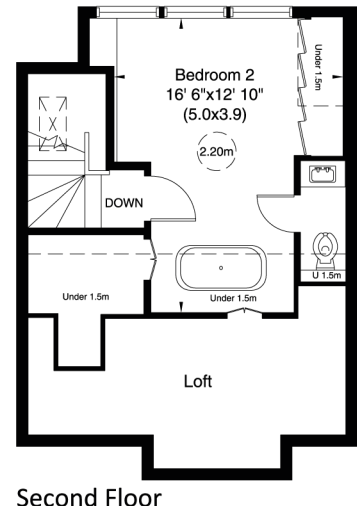
Not to Scale, for identification only



Ground Floor



First Floor



Second Floor

For guidance only and must not be relied upon as a statement of fact.

All measurements and areas are approximate only (and have been prepared in accordance with the current edition of the RICS Code of Measuring Practice).

