

DUNDONALD ROAD - NW10



Guide Price £2,695,000

DUNDONALD ROAD - NW10

Nestled amongst the Victorian & Edwardian terraced houses of Queens Park, sits a notable exception. A newly constructed family home.



CLICK TO
ENQUIRE

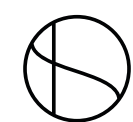


CLICK FOR
FULL LISTING



DUNDONALD ROAD - NW10

MEDIA ROOM



DUNDONALD ROAD - NW10



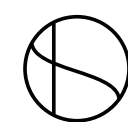
Queens Park has evolved into one of London's most sought after family neighbourhoods. A balance of urban convenience, over thirty acres of green space, stylish cafés, wait list worthy restaurants and independent food & wine stores.

Nestled amongst the Victorian & Edwardian terraced houses sits a notable exception. Dundonald Road, a newly constructed family home, conceived by COEUS Design Studio and completed in 2022.

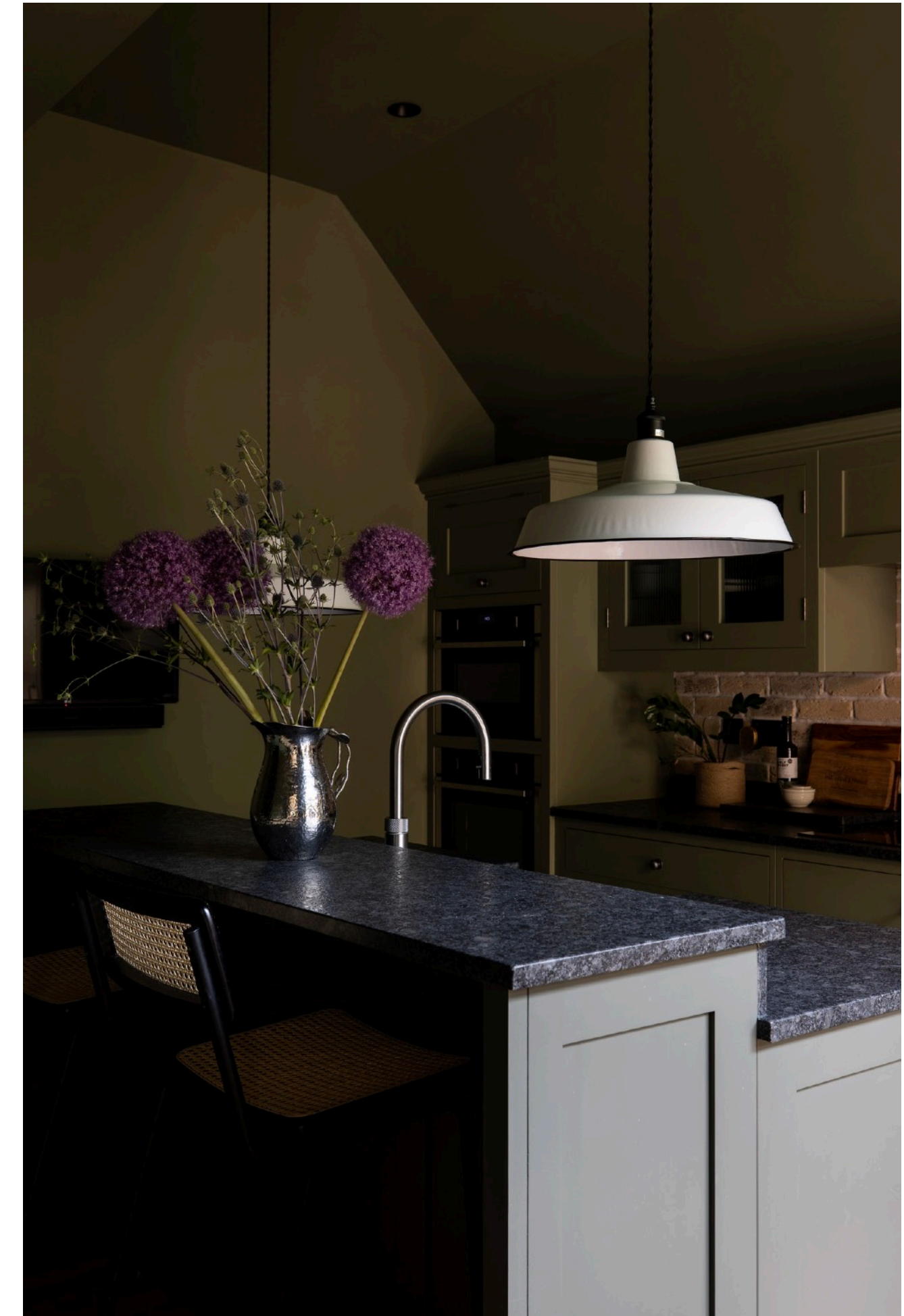
Designed externally to co-exist with the prevailing architectural style, with interiors inspired by modern living, the house's communal areas combine a seamless flow of family accommodation, with quieter, more adult spaces.

A private office and a media room both open to a courtyard garden, one of two outside spaces.

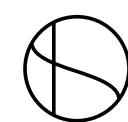
With air conditioning to the principal rooms, underfloor heating and a full security system, Dundonald Road has it all, including green credentials - it's the most energy efficient house on the street.



DUNDONALD ROAD - NW10



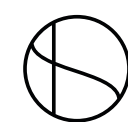
KITCHEN



DUNDONALD ROAD - NW10



PRINCIPAL BEDROOM SUITE



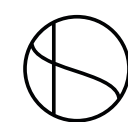
DUNDONALD ROAD - NW10



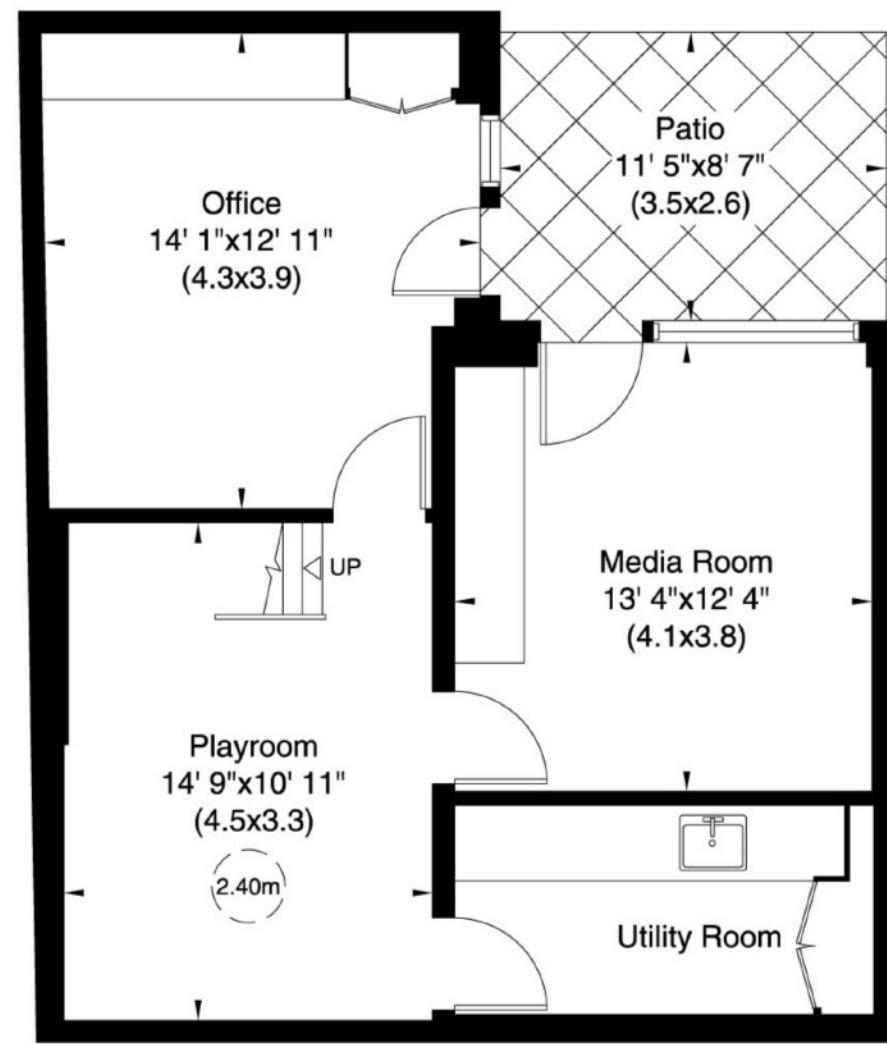
GARDEN



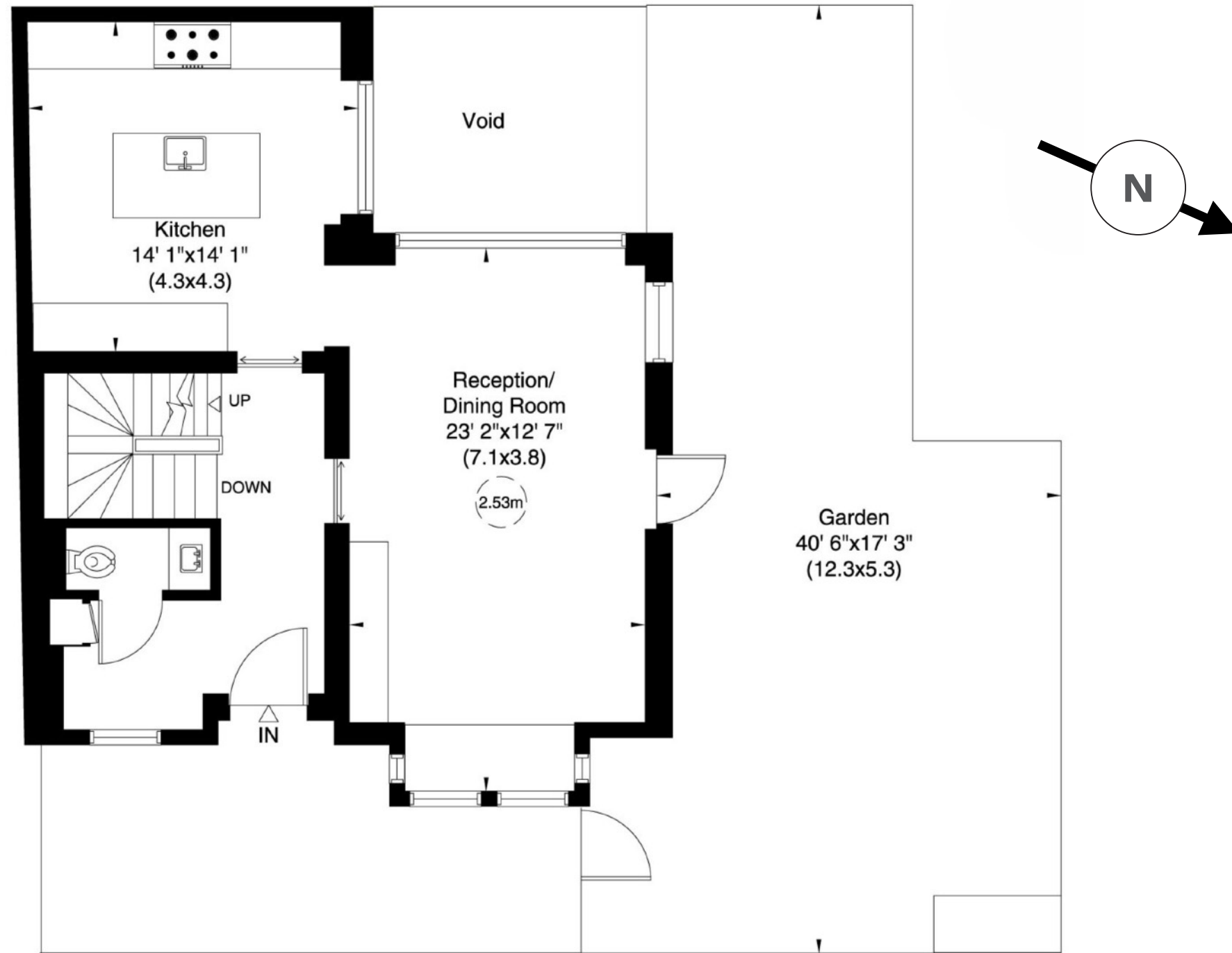
TERRACE



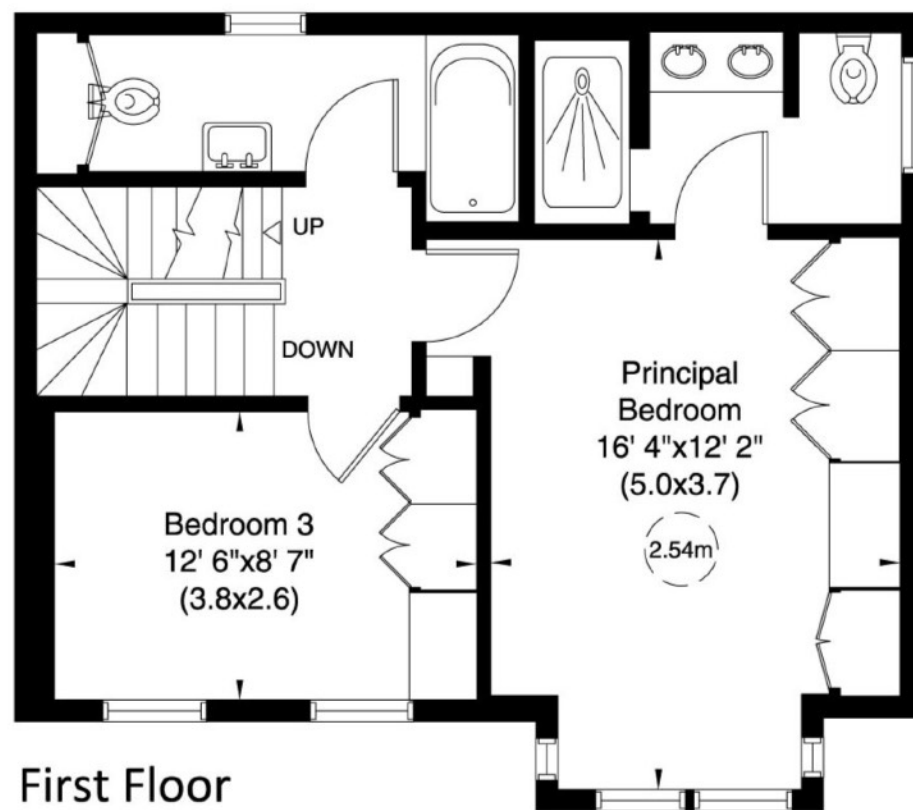
DUNDONALD ROAD - NW10



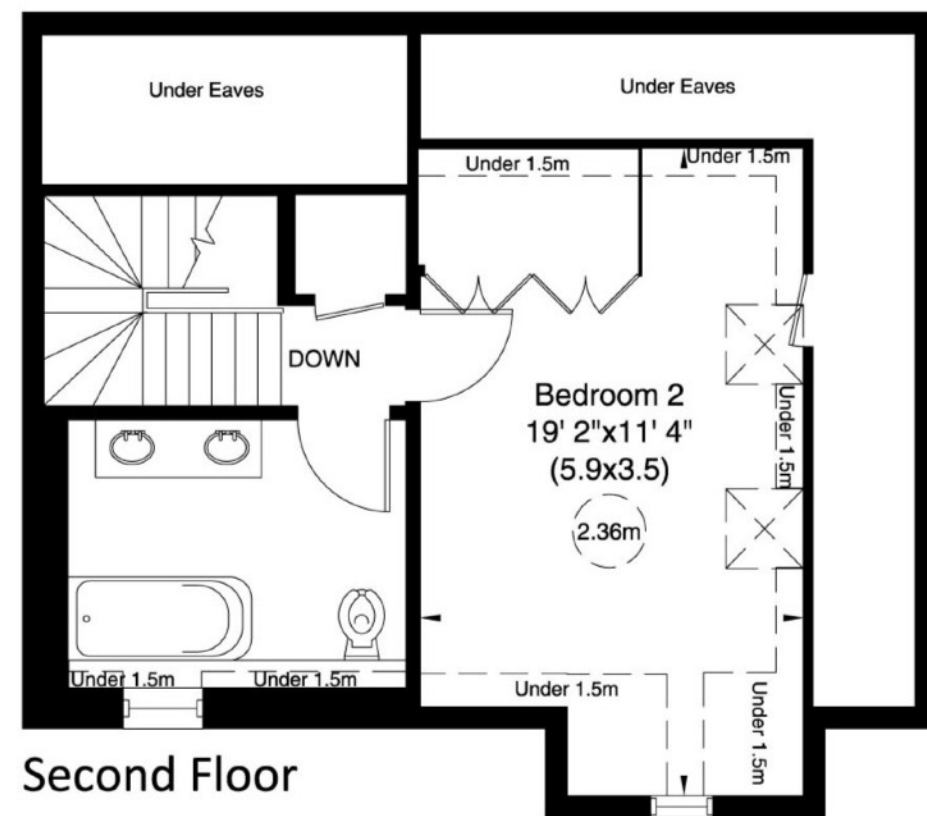
Lower Ground Floor



Ground Floor



First Floor



Second Floor

Approx Gross Internal Area

2,307 Sq Ft (214 Sq M) Including under eaves + under 1.5m

2,102 Sq Ft (195 Sq M) Excluding under eaves + under 1.5m

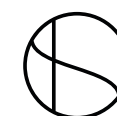
Plan for illustration purposes only. Not to scale.

Accommodation

- Principal bedroom with en-suite shower room
- Bedroom 2 with adjacent bathroom
- Bedrooms 3 | Family bathroom
- Bespoke 'Higham Furniture' Kitchen
- Reception/ Dining room
- Reception 2/ Media Room
- Playroom
- Office
- Utility room
- Guest WC

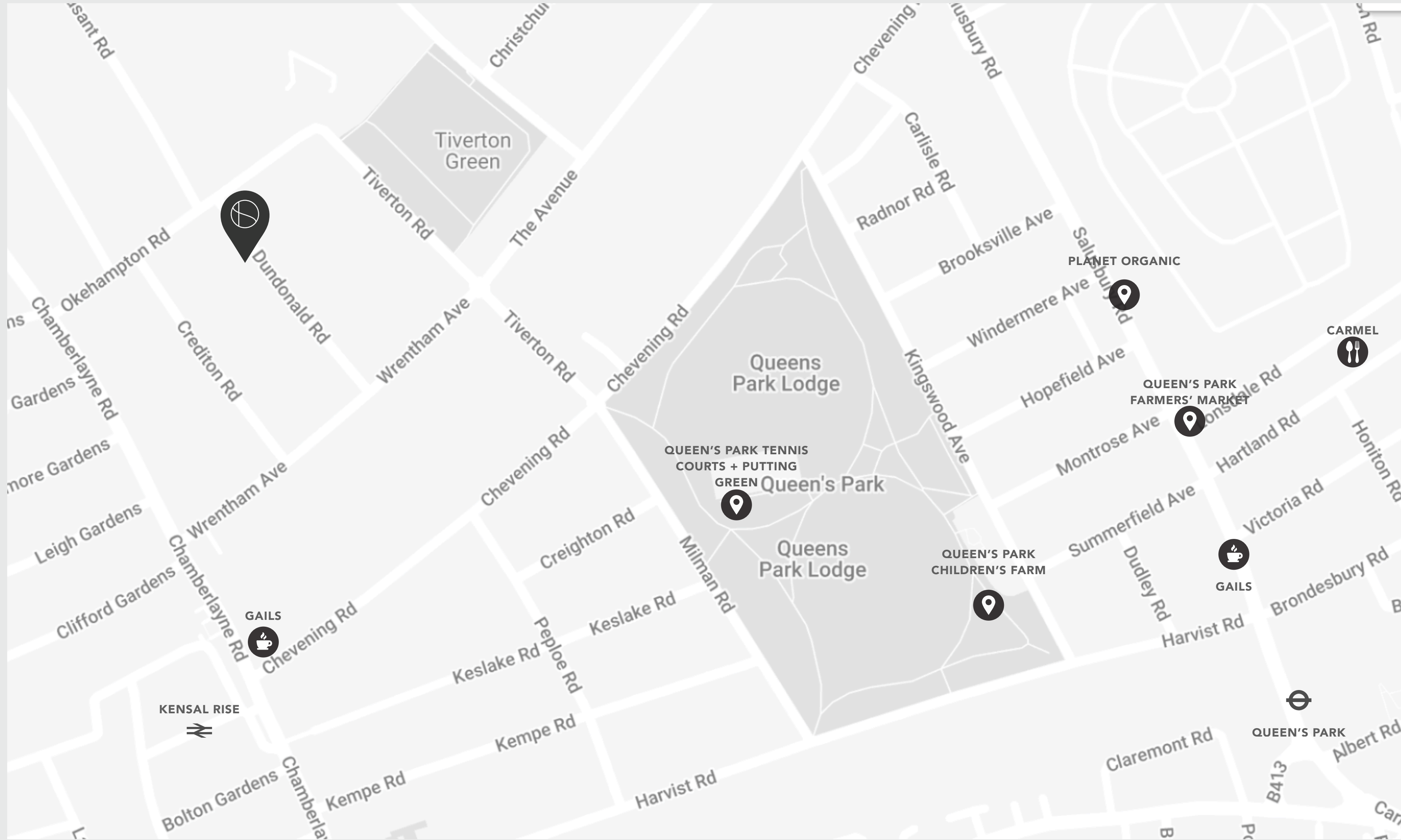
Amenities

- Private garden
- Courtyard
- Under floor heating
- Air-conditioning
- Kingsbrook Joinery fitted furniture
- Integrated Sonos sound system
- x4 external security cameras
- Alarm system
- Residents permit parking



DUNDONALD ROAD - NW10

Local Area



Terms

- **Tenure:** Freehold
- **Council Tax band:** G

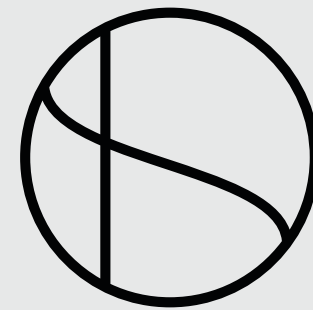
Energy Performance Certificate

Score	Energy rating	Current	Potential
92+	A		92 A
81-91	B	86 B	
69-80	C		
55-68	D		
39-54	E		
21-38	F		
1-20	G		



SIMON DEEN

Real Estate



CLICK TO
ENQUIRE



CLICK FOR
FULL LISTING

Tel: **020 3005 3206** Email: **INFO@SIMONDEEN.COM**

The particulars of any property do not constitute an offer or contract or any part of one. You should not rely on statements by or on behalf of Simon Deen Real Estate in any particulars or otherwise expressed orally or in writing ("information") as being factually accurate about the property, its condition or its value. Neither Simon Deen Real Estate nor any joint agent has any authority to make any representations about the property and accordingly any information provided is entirely without responsibility on the part of Simon Deen Real Estate, its officers or employees, or its client. Photographs and videos show only certain parts of properties as they appeared at the time they were taken. Any areas, measurements or distances provided are approximate only. Computer-generated images give only an indication as to how a property may look cannot be relied upon as an accurate representation as any particular matter. Any reference to alterations to, or use of, any part of a property does not mean that any necessary planning, building regulations or other consent has been obtained. A buyer or lessee must satisfy themselves on the basis of their own investigations that these matters have been properly dealt with. Any indication on a map as to the position of a property is provided by third-party mapping software or applications and cannot be relied upon.