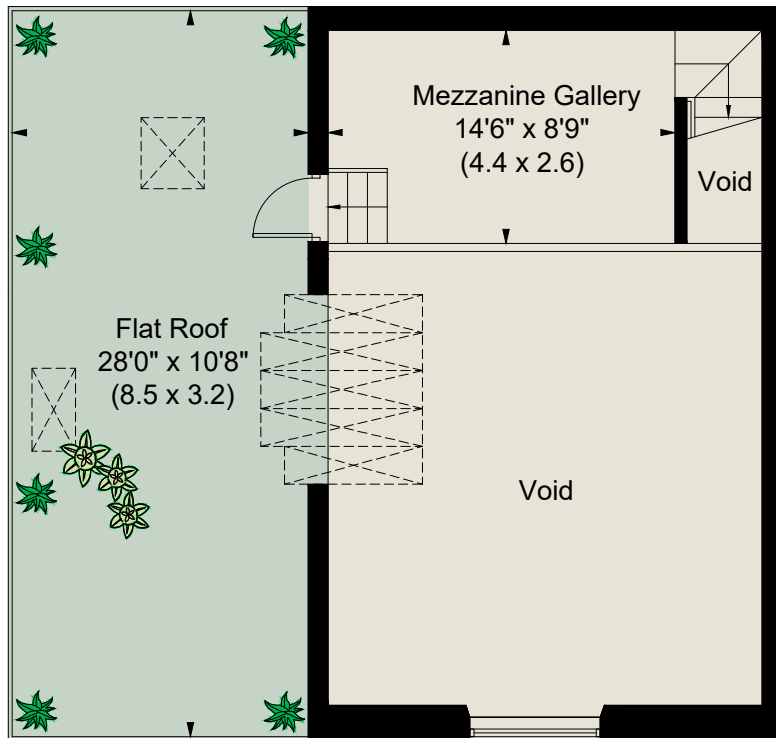
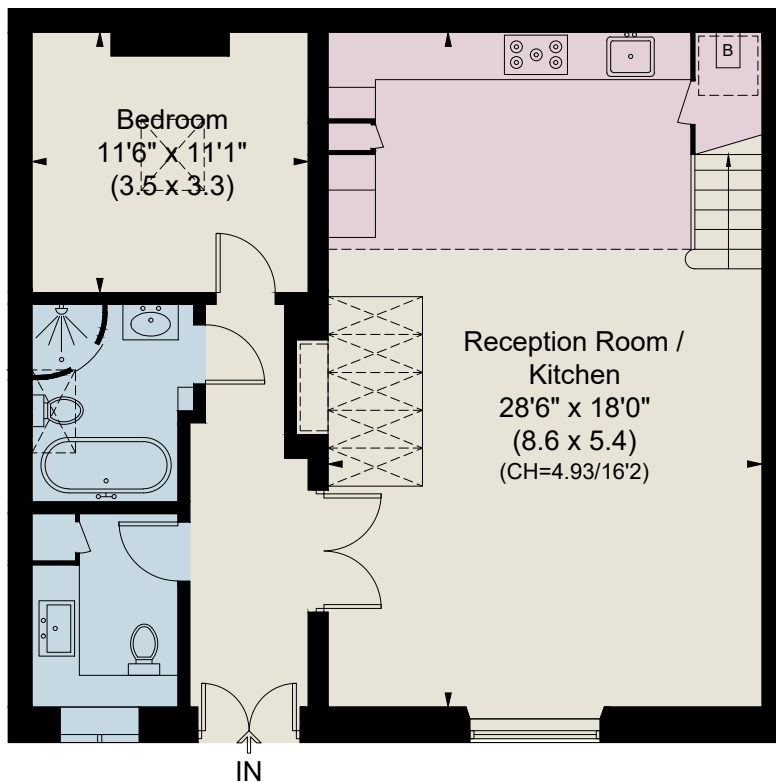


# Primrose Hill Studios, NW1

Approximate Area = 1004 sq ft (93.3 sq m)  
(Including Mezzanine Level / Excluding Void)  
Including Limited Use Area = 14 sq ft (1.3 sq m)



**Mezzanine Level**



**Ground Floor**

This plan is for layout guidance only. Not drawn to scale unless stated. Windows and door openings are approximate. Whilst every care is taken in the preparation of this plan, please check all dimensions, shapes and compass bearings before making any decisions reliant upon them. (ID832614)