

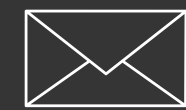
LYNCROFT GARDENS NW6



Guide Price £3,250,000

LYNCROFT GARDENS — NW6

Period elegance meets style and sophistication in
this meticulously restored Edwardian family home



CLICK TO
ENQUIRE

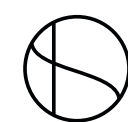


CLICK FOR
FULL LISTING



LYNCROFT GARDENS — NW6

PRIVATE REAR GARDEN



LYNCROFT GARDENS — NW6



From the moment you enter this meticulously restored Edwardian house, the dramatically decorated entrance hallway offers a prelude to the family home that lies beyond.

The line of sight offers an immediate glimpse of the sun-drenched west-facing garden, viewed through the kitchen's full-height powder-coated steel doors, which allow for a seamless link between interior and exterior living spaces.

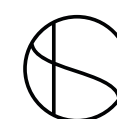
The ground floor provides exceptional reception space, including a full width open plan kitchen/ dining area, featuring a bespoke deVOL kitchen with Carrara marble countertops and splashbacks, and a more formal double reception room to the front of the house, including a TV area and a dry bar.

A large, air conditioned principal bedroom suite occupies the entire first floor, and comprises a dressing room, a full bathroom with separate shower and bespoke double vanity unit.

Four further double bedrooms and two further bathrooms provide the ideal balance of accommodation for a growing family, and a full height basement allows for future development, and in the meantime an abundance of storage.

Positioned 300m from West End Lane, and just over 1km from Hampstead High Street, Lyncroft Gardens provides easy access to every conceivable amenity.

Some of the best schools in the country can be found locally. West End Lane and Heath Street benefit from an abundance of shops, cafés and restaurants. You're only ten minutes from Bond Street on the Jubilee Line, Hampstead Heath on the London Overground and London St Pancras on the Thameslink.



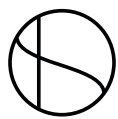
LYNCROFT GARDENS — NW6



RECEPTION ROOM



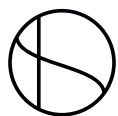
EAT IN KITCHEN THROUGH TO RECEPTION ROOM



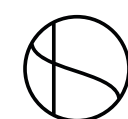
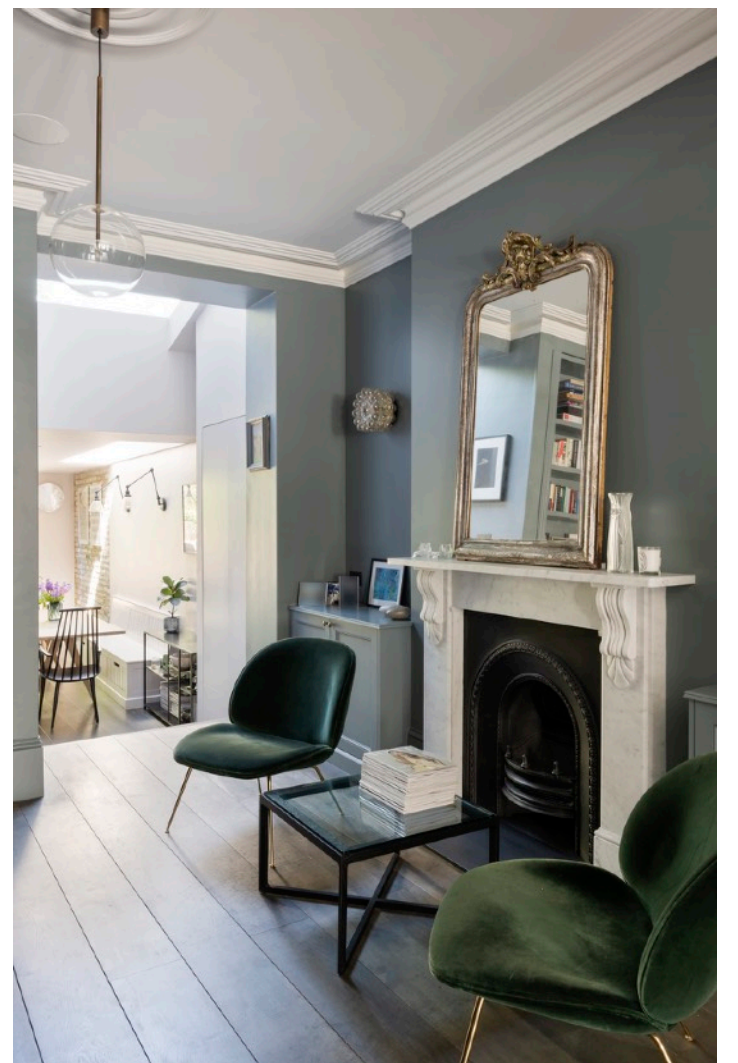
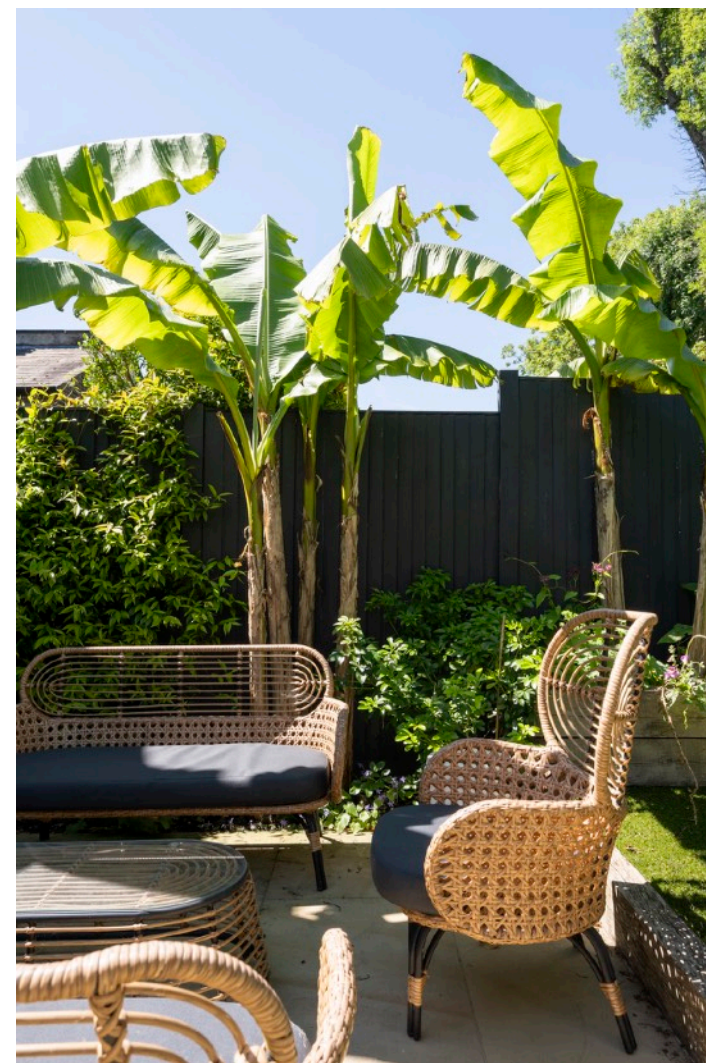
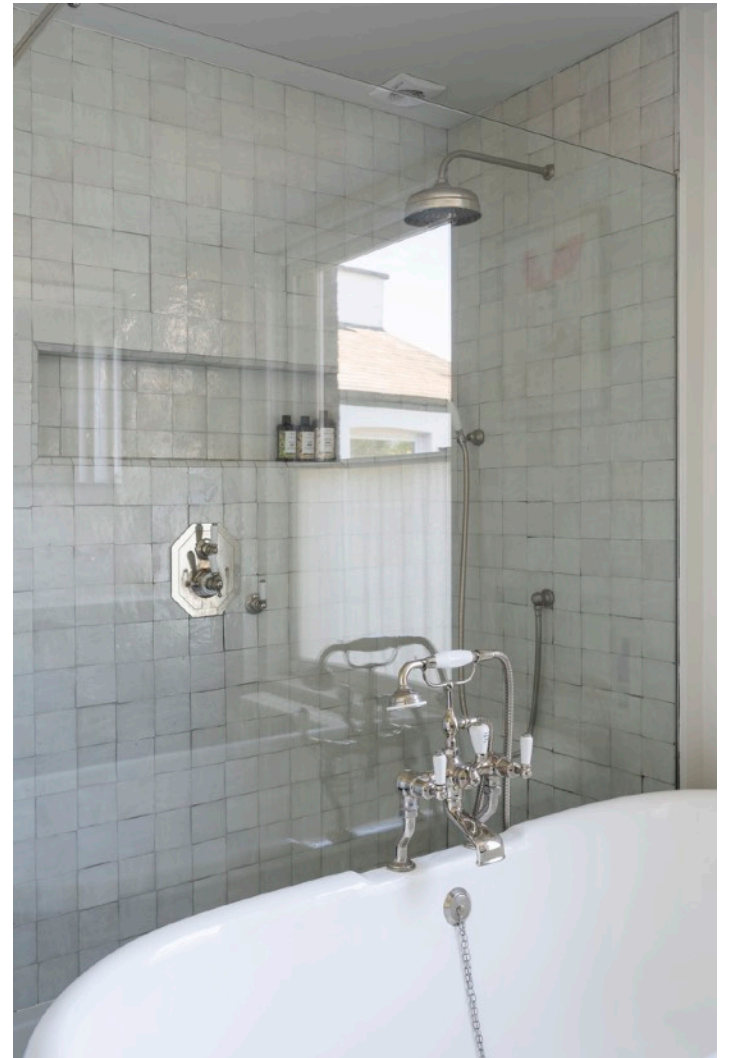
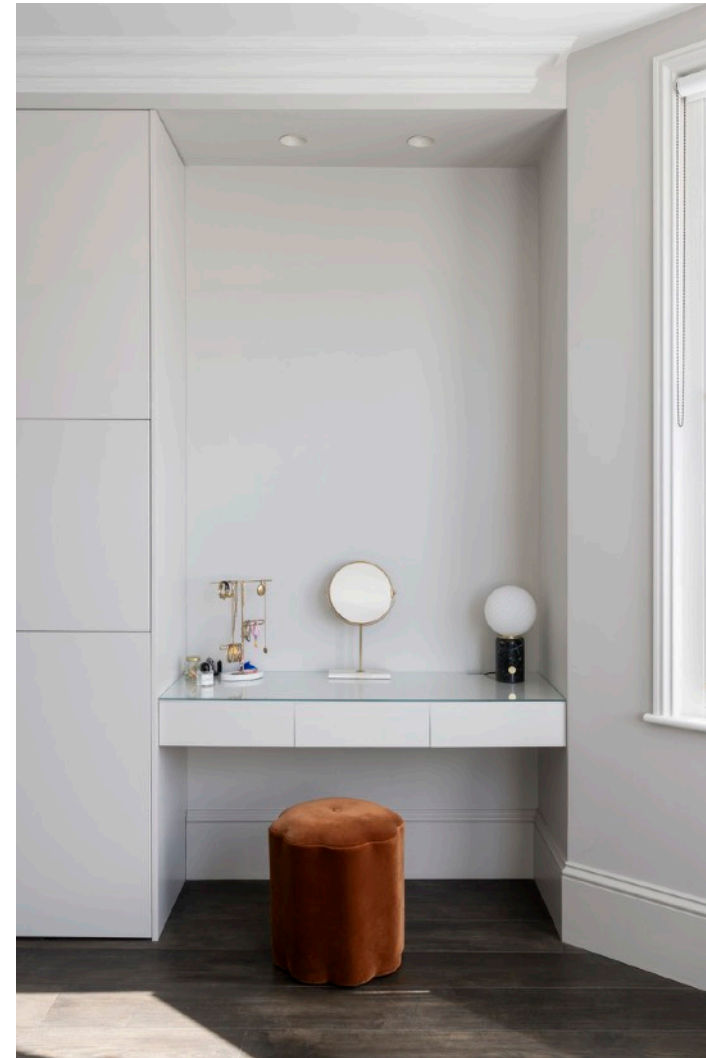
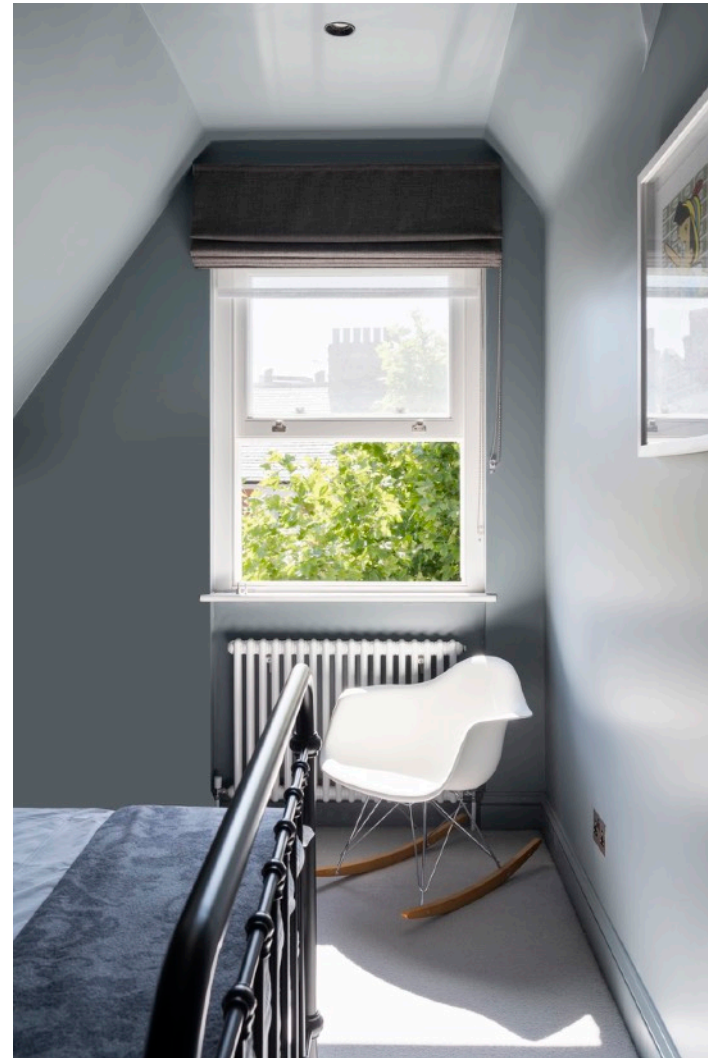
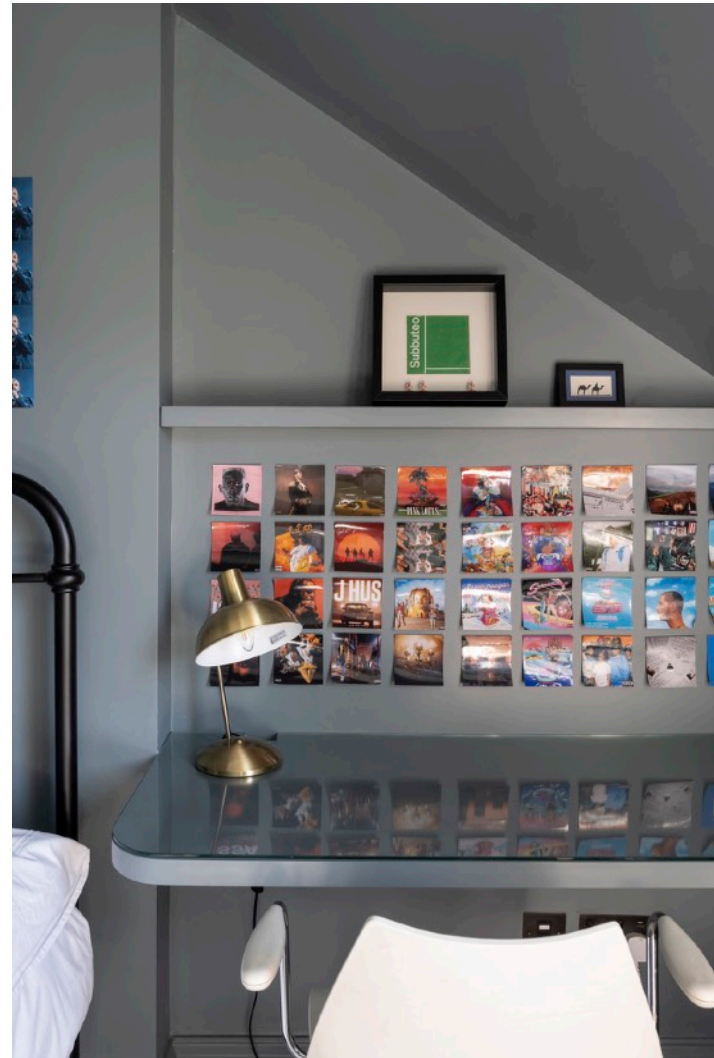
LYNCROFT GARDENS — NW6



PRINCIPAL BEDROOM SUITE



LYNCROFT GARDENS - NW6



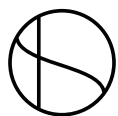
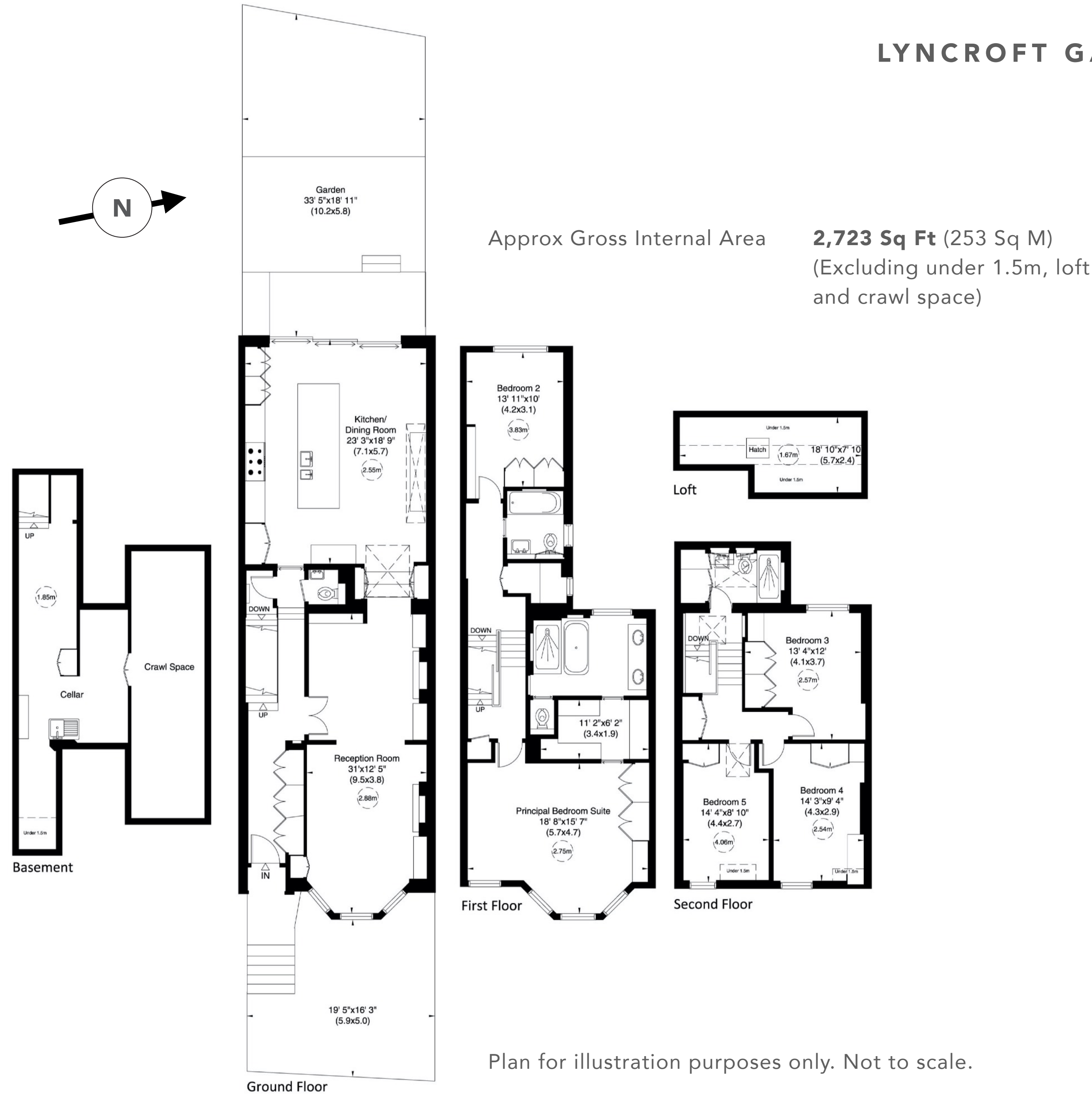
LYNCROFT GARDENS — NW6

Accommodation

- Principal bedroom with en-suite bathroom and walk in wardrobe
- 4 further bedrooms
- Family bathroom
- Shower room
- Double reception room
- Open plan kitchen/ dining room
- Laundry room
- Guest WC
- Full height basement including utility area

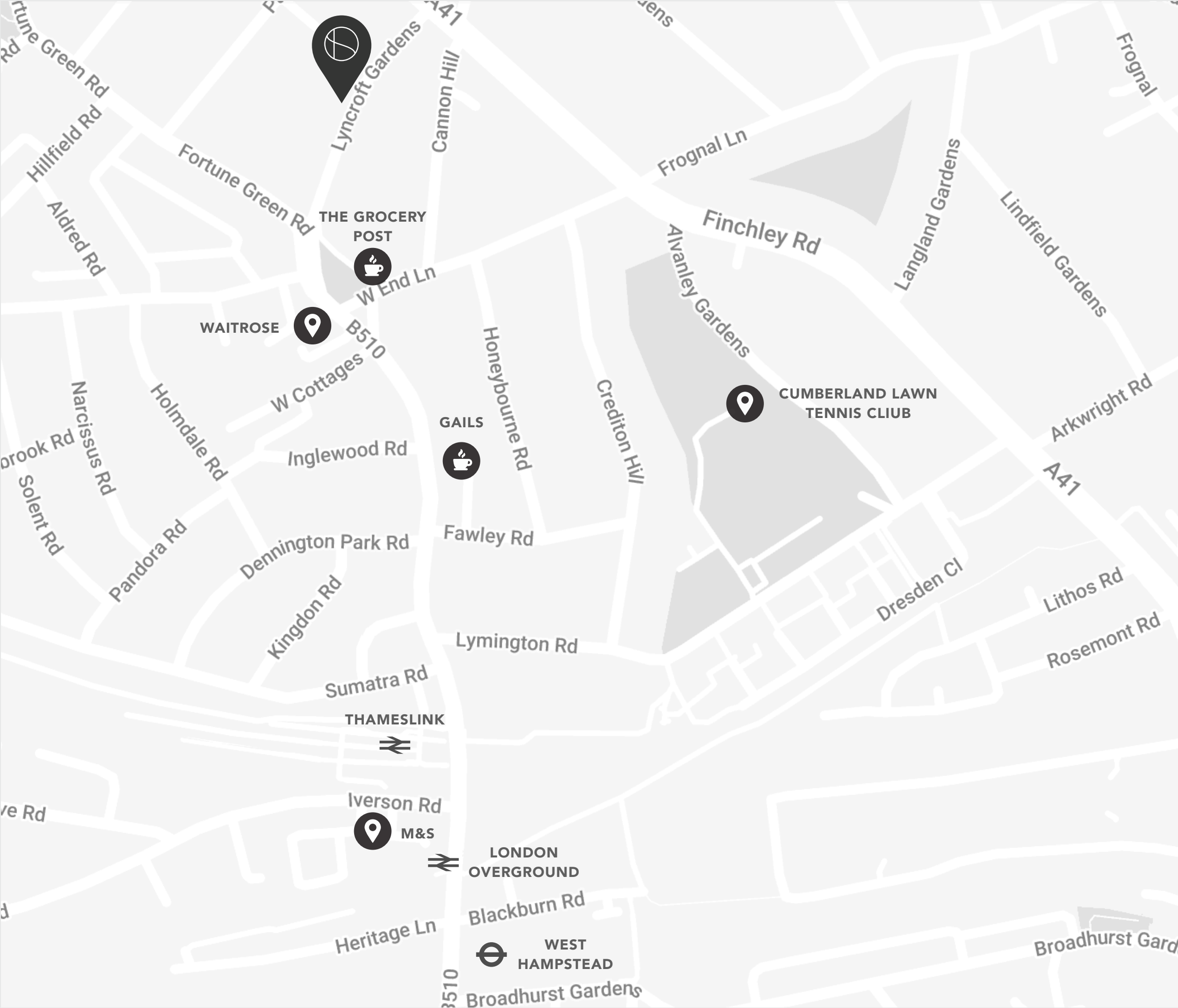
Amenities

- West facing garden
- Integrated Sonos sound system
- Air conditioning to principal bedroom & bedroom 2
- Fully bespoke deVOL kitchen with Carrara marble countertops and splashbacks, hidden double larder and double fridge/ freezer
- Bespoke carpentry throughout, including fitted joinery to all bedrooms
- Paint scheme by Joa Studholme, Farrow & Ball's head colour consultant
- Full alarm system including window sensors
- Underfloor heating to kitchen/ dining room and bathroom 2
- Cast iron radiators throughout



LYNCROFT GARDENS — NW6

Local Area



Terms

- **Tenure:** Freehold
- **Council Tax band:** London Borough of Camden (Band G)

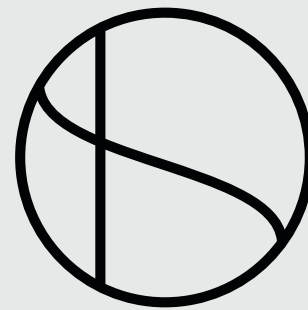
Energy Performance Certificate

Score	Energy rating	Current	Potential
92+	A		
81-91	B		82 B
69-80	C		
55-68	D	68 D	
39-54	E		
21-38	F		
1-20	G		



SIMON DEEN

Real Estate



CLICK TO
ENQUIRE



CLICK FOR
FULL LISTING

Tel: **020 3005 3206** Email: **INFO@SIMONDEEN.COM**

The particulars of any property do not constitute an offer or contract or any part of one. You should not rely on statements by or on behalf of Simon Deen Real Estate in any particulars or otherwise expressed orally or in writing ("information") as being factually accurate about the property, its condition or its value. Neither Simon Deen Real Estate nor any joint agent has any authority to make any representations about the property and accordingly any information provided is entirely without responsibility on the part of Simon Deen Real Estate, its officers or employees, or its client. Photographs and videos show only certain parts of properties as they appeared at the time they were taken. Any areas, measurements or distances provided are approximate only. Computer-generated images give only an indication as to how a property may look cannot be relied upon as an accurate representation as any particular matter. Any reference to alterations to, or use of, any part of a property does not mean that any necessary planning, building regulations or other consent has been obtained. A buyer or lessee must satisfy themselves on the basis of their own investigations that these matters have been properly dealt with. Any indication on a map as to the position of a property is provided by third-party mapping software or applications and cannot be relied upon.