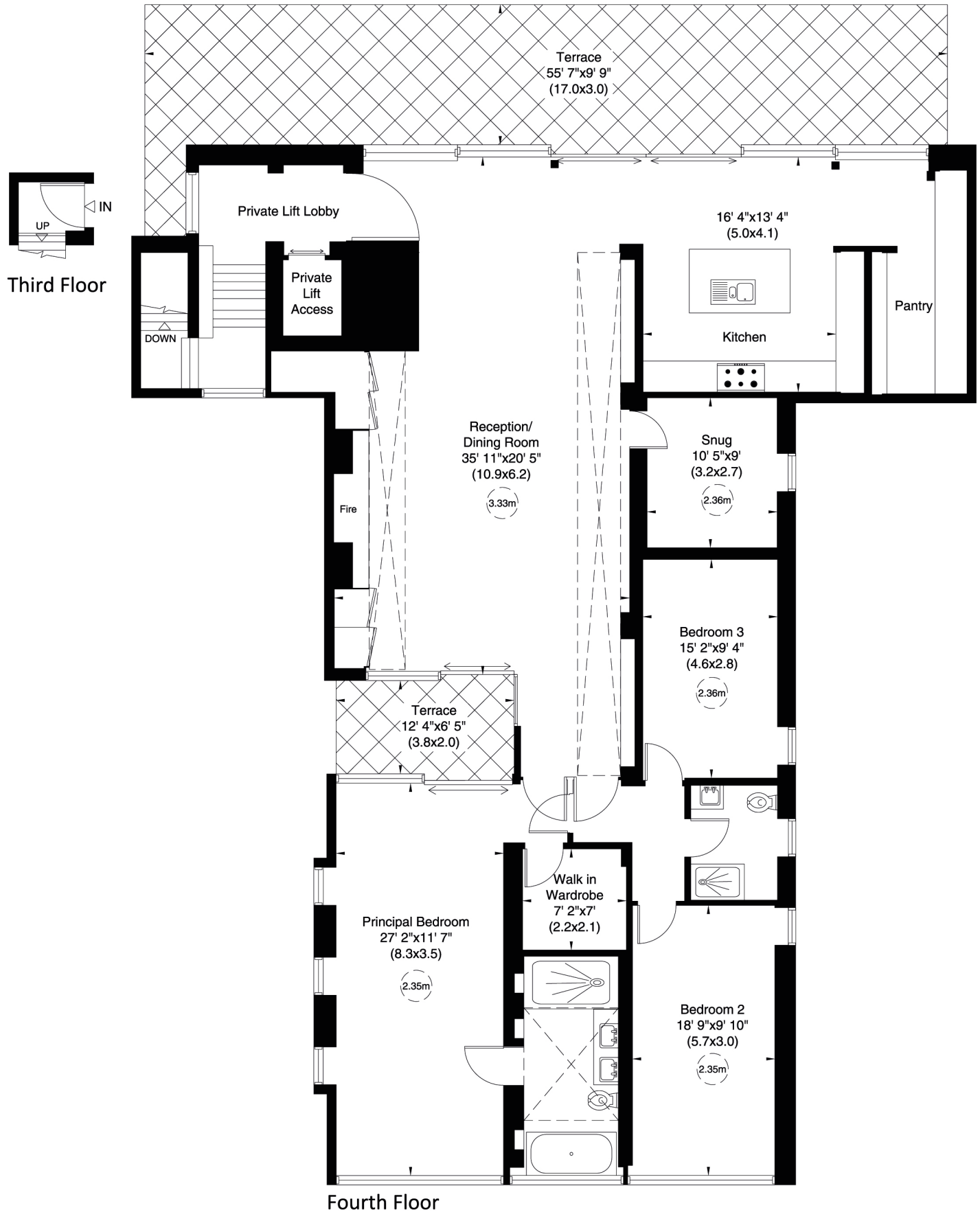


Penthouse, 110- 114 Grafton Road, NW5

Approximate Gross Internal Area
228 sq m/ 2455 sq ft Excluding Lift

Not to Scale, for identification only



For guidance only and must not be relied upon as a statement of fact.
All measurements and areas are approximate only (and have been prepared in accordance with the current edition of the RICS Code of Measuring Practice).

